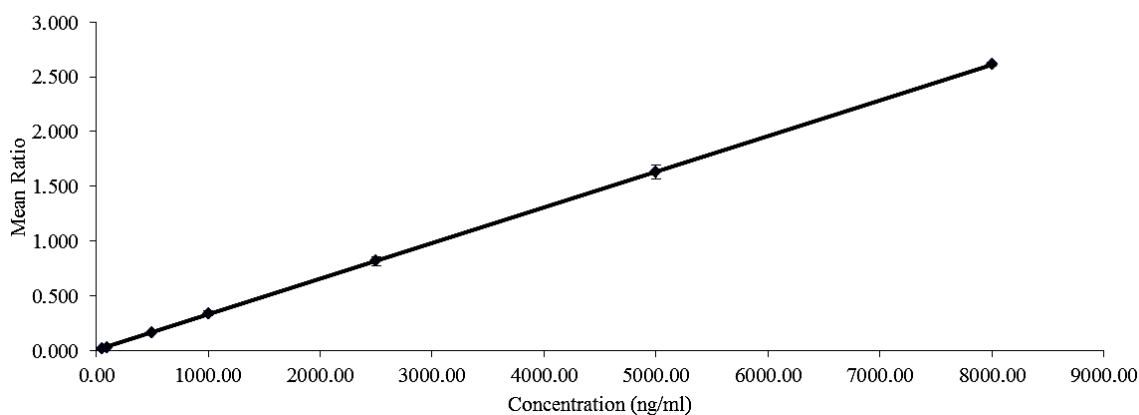


### Calibration/standard curve

A calibration curve, constructed with blank sample and zero-sample (blank with internal standard) and 7 non-zero standard samples, including lower limit of quantification (LLOQ) sample was used in the validation and the analysis of the study.

Mean RSQ obtained from six calibration curves was 0.999 which indicated good and accepted linearity.



**Figure 11:** Linearity of six calibration curves (values expressed as mean  $\pm$  STD)

### Accuracy

Accuracy of samples was 109.49%.

### Precision

Precision was estimated from the standard curve and the quality control samples as seen in table 5.